

HARLECH

Barrine façade



Corella façade



Mackay façade



Lonsdale façade



HARLECH 476

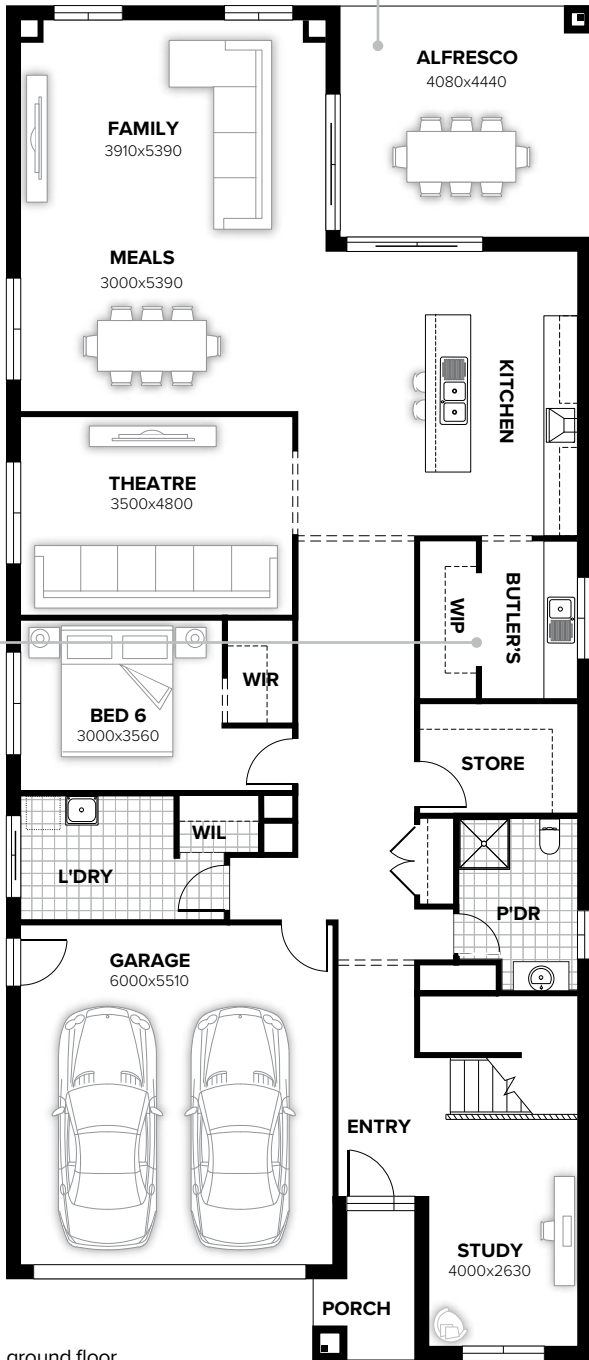
6 3 1 2

get your friends together

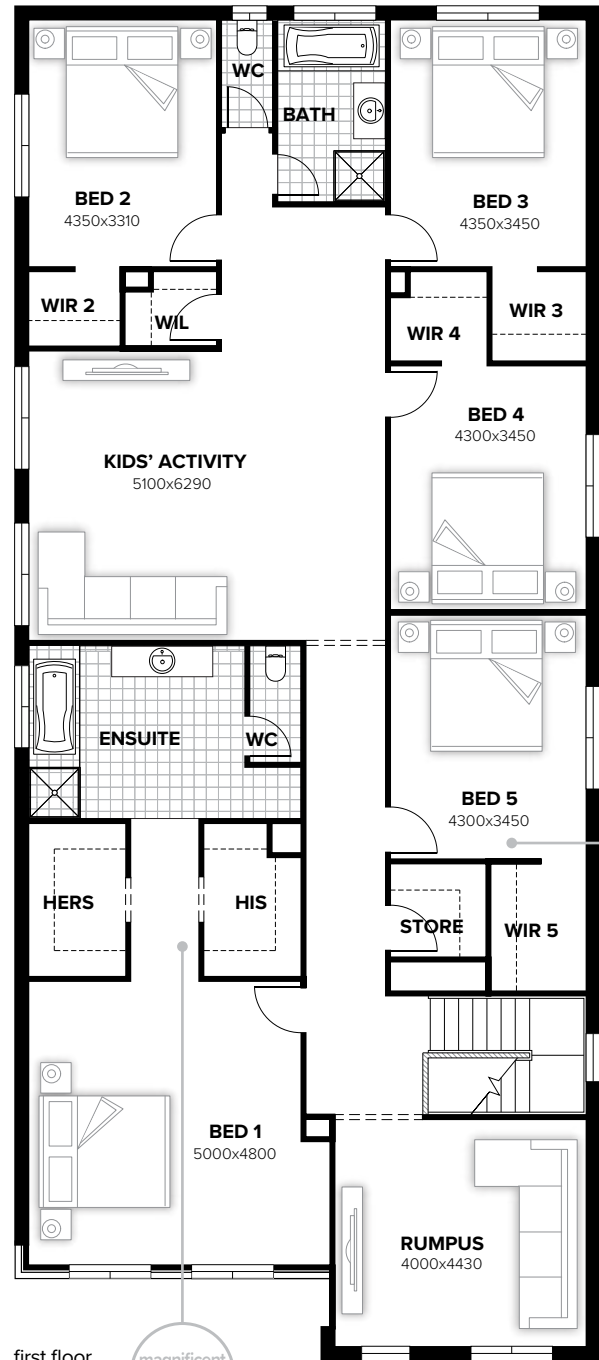
pantry perfection

perfect for guests

magnificent master suite



ground floor



first floor

FLOORPLAN OPTIONS

Want to put a personal touch on your home? Speak to your New Home Consultant about the exciting range of ready-to-go design options for this floorplan.

Popular design options include:

- Kitchen option
- Laundry chute option
- Ensuite upgrade
- Balcony option on master bedroom
- Larger shower in ensuite
- Gas fireplace in family room

residence	417.39sqm	44.93sq
alfresco	18.11sqm	1.95sq
porch	4.04sqm	0.43sq
garage	36.11sqm	3.89sq
total	475.65sqm	51.20sq

Listed details based on Barrine façade floorplan (illustrated)

Call 13 BURBANK Visit burbank.com.au

Burbank 
#noplacelikehome

*Copyright conditions. All photos and illustrations are representative only. Floor plans and specifications may be varied by Burbank without notice, the dimensions are diagrammatic only and a Building Contract with final drawings will display correct dimensions and detail. All designs are the property of Burbank and must not be used, reproduced, copied or varied, wholly or in part without written permission from an authorised Burbank representative. Copyright Burbank Australia (NSW) Pty Ltd. ABN 88 610 822 870. NSW BL 295627C. ACT BL 2016566.

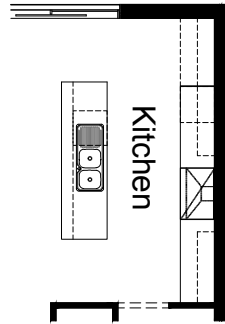
FLOORPLAN OPTIONS

HARLECH 476



OPTION K1

Provide Kitchen upgrade with laminated open shelf above refrigerator space, 1no. laminated MW provision with pot drawer below, 2no. 800mm base cupboards, 1no. 600mm pot drawers, 2no. 800mm overhead cupboards, 2no. 400mm overhead cupboards. Island bench remains unchanged. Provide additional tiled splash back and bench top to suit. Provide 900mm upright cooker and rangehood in lieu of standard appliances.



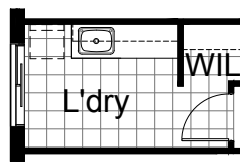
OPTION G1

Provide extension to Garage to create additional Storage area. Provide pitched roof and lightweight cladding (Scyon Stria) above. Increases area by 4.52m². Increases width by 840mm.



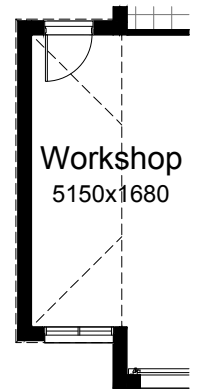
OPTION LD1

Provide Laundry Option with additional inset laminated trough, 2no. 900mm base cupboards, 2no. 900mm overhead cupboards and additional tiled splash back and bench top to suit.



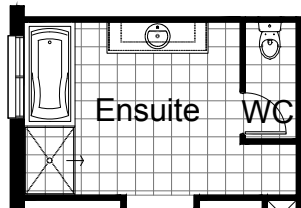
OPTION G2

Provide extension to Garage to create Workshop area including additional window to suit. Provide pitched roof and lightweight cladding (Scyon Stria) above. Increases area by 9.45m². Increases width by 1680mm.



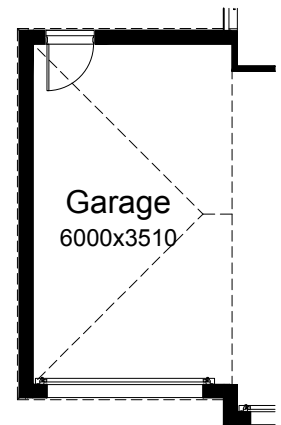
OPTION ENS1

Provide Ensuite upgrade with additional 1200mm x 900mm tiled shower base in lieu of standard.



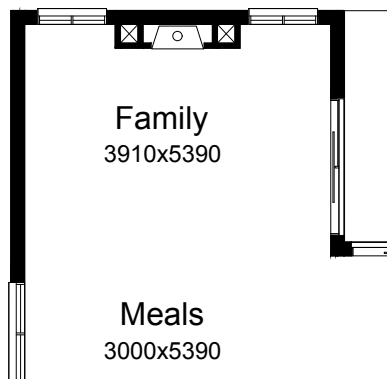
OPTION G3

Provide triple car Garage with pitched roof and lightweight cladding (Scyon Stria) above including additional Garage door as per colour selection. Increases width by 3600mm. Increases area by 23.29m².



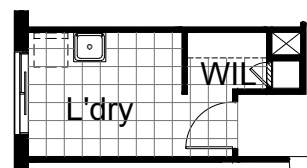
OPTION IP1

Provide Jetmaster SL-350 gas fireplace, 400mm off floor level in a 1400mm x 420mm boxed out plaster wall with a 4 sided black fascia to Family room rear wall. Relocate Plumbing stack, void and 2no. Family windows to suit.



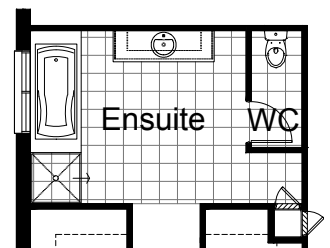
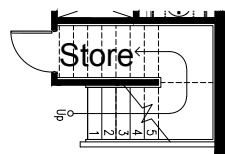
OPTION IP3

Provide Laundry Chute.



OPTION IP2

Provide Store to under side of staircase with additional 1no. 720mm flush panel hinged door.



Call 13 BURBANK Visit burbank.com.au

Burbank 
#noplacelikehome

*Copyright conditions. All photos and illustrations are representative only. Floor plans and specifications may be varied by Burbank without notice, the dimensions are diagrammatic only and a Building Contract with final drawings will display correct dimensions and detail. All designs are the property of Burbank and must not be used, reproduced, copied or varied, wholly or in part without written permission from an authorised Burbank representative. Copyright Burbank Australia (NSW) Pty Ltd. ABN 88 610 822 870. NSW BL 295627C. ACT BL 2016566.